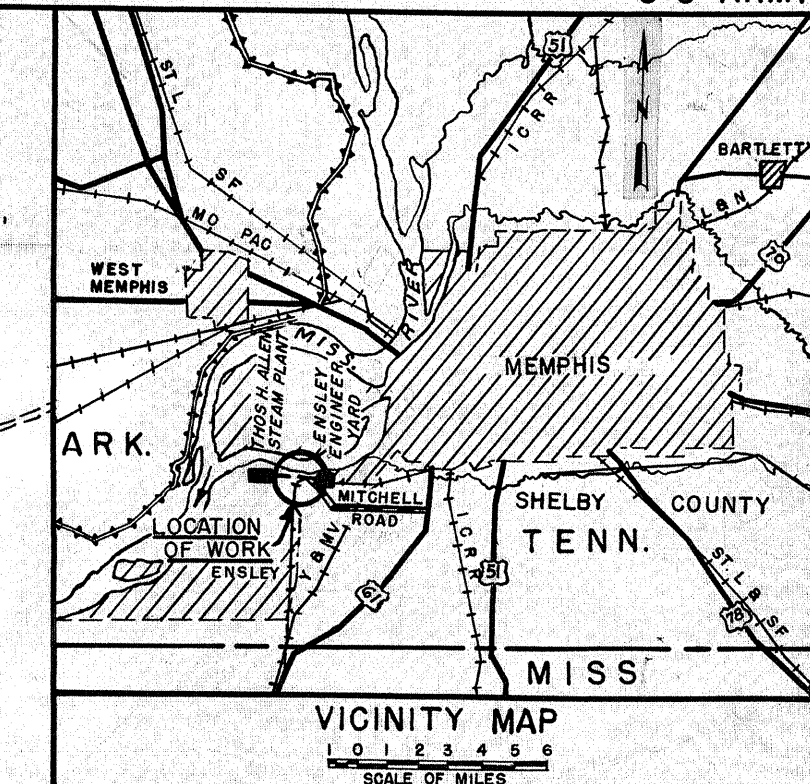
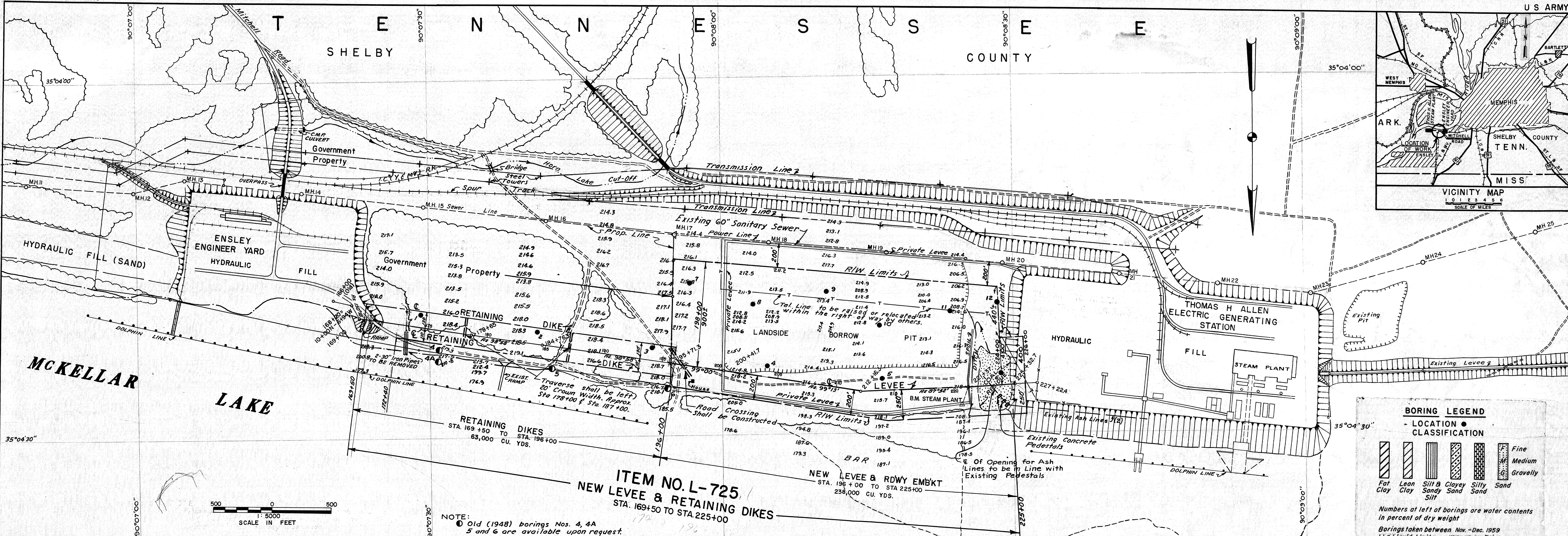


T E N N E S S E E COUNTY



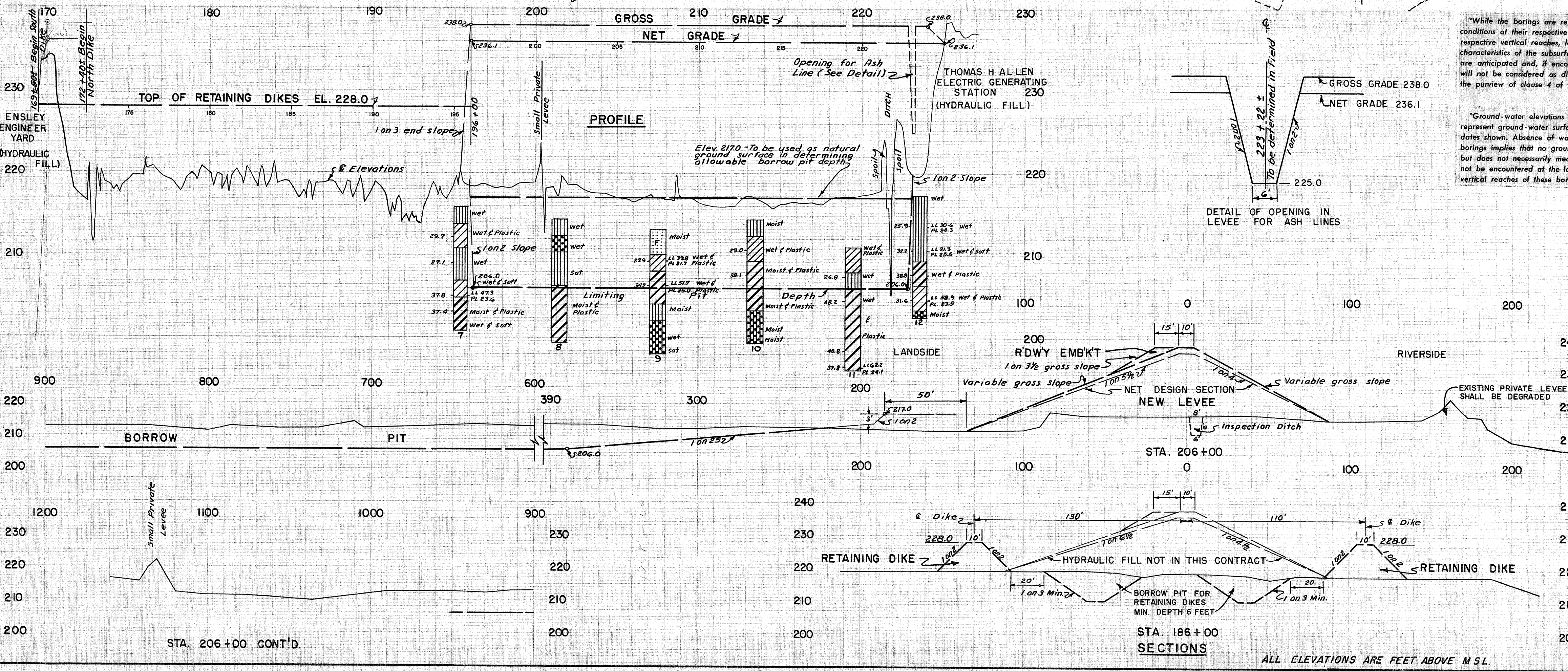
BORING LEGEND

LOCATION CLASSIFICATION

- Fat Clay
- Lean Clay
- Silt & Silty Sand
- Clayey Sand
- Silty Sand
- Sand
- Fine Medium Gravelly

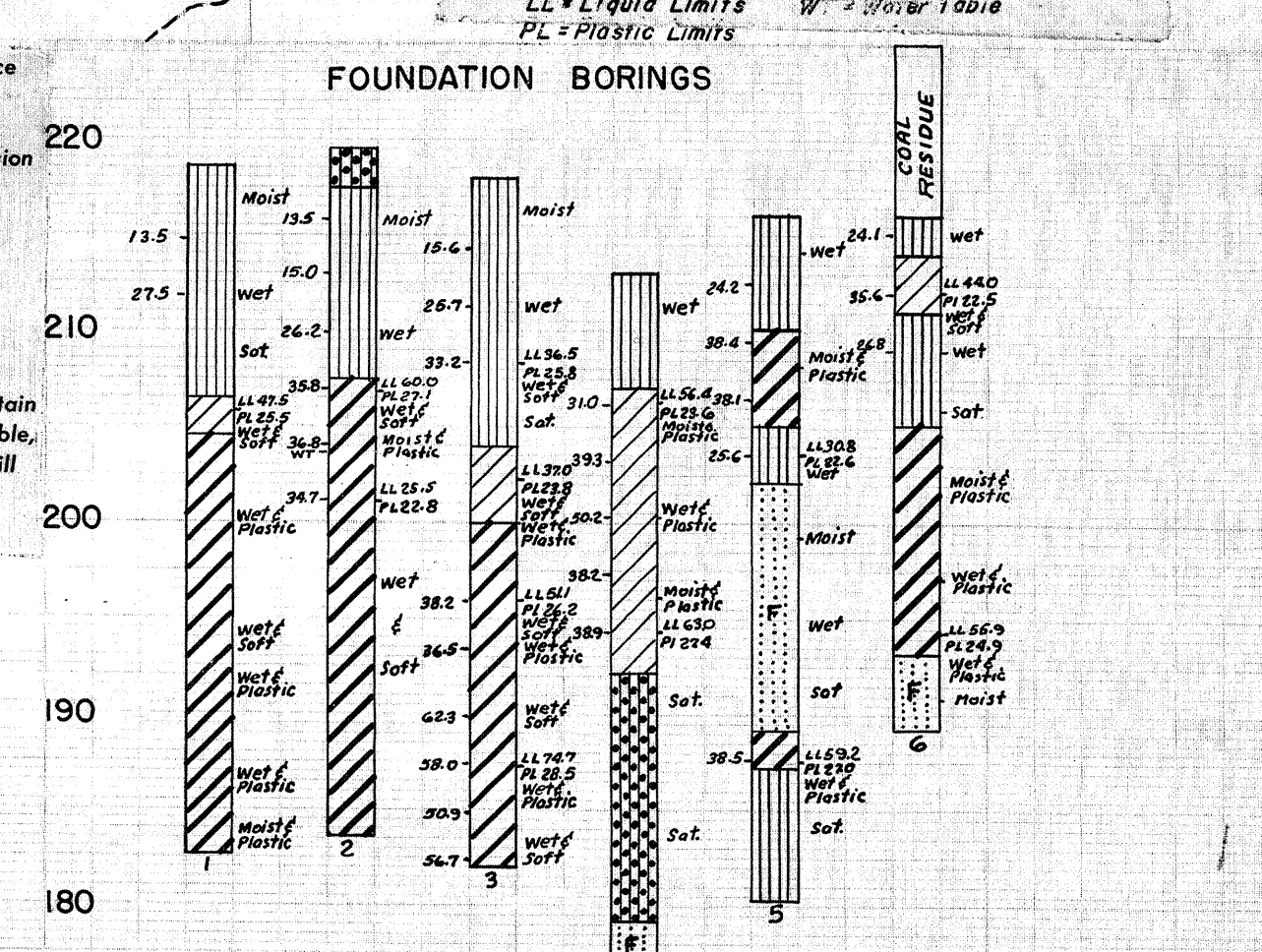
Numbers at left of borings are water contents in percent of dry weight

Borings taken between Nov.-Dec. 1959
LL = Liquid Limits W = Water Table PL = Plastic Limits



"While the borings are representative of subsurface conditions at their respective locations and for their respective vertical reaches, local minor variations in characteristics of the subsurface materials of the region are anticipated and, if encountered, such variations will not be considered as differing materially within the purview of clause 4 of the contract."

"Ground-water elevations shown on boring logs represent ground-water surfaces encountered on the dates shown. Absence of water surface data on certain borings implies that no ground-water data is available, but does not necessarily mean that ground-water will not be encountered at the locations or within the vertical reaches of these borings."



REVISION	DATE	DESCRIPTION	BY
1	2-12-60	Minor Correction and Additions	J.H.B.

**U.S. ARMY ENGINEER DISTRICT, MEMPHIS
CORPS OF ENGINEERS
MEMPHIS, TENN.**

**MISSISSIPPI RIVER
MEMPHIS HARBOR PROJECT
LEVEE WORK
ITEM NO. L-725
ENSLEY, TENN.**

STA. 169+50 TO STA. 196+00
STA. 196+00 TO STA. 225+00

RETAINING DIKS 63,000 CU. YDS.
LEVEE EMBKT 238,000 CU. YDS.

DRAWN BY J.H.B., D.R.P.
TRACED BY B.J.W.
CHECKED BY J.H.B.
SUBMITTED: *[Signature]*
APPROVAL RECOMMENDED: *[Signature]*
APPROVED: *[Signature]*

SCALE AS SHOWN
DATE FEBRUARY 1960
INVITATION NO. CIVENS 40-041-60-73
DATED 2 MAY 1960

SHEET 1
OF 1
DRAWING NO. 1
SERIAL 16362
FILE 153/L-9